



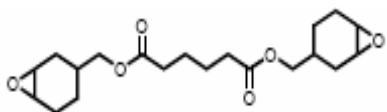
Omnilane OC 3005

Cycloaliphatic Epoxide

General Description

Omnilane OC 3005 cycloaliphatic epoxide is a standard flexibilizing cycloaliphatic epoxide resin. It is useful in many applications in which a higher viscosity or more flexible film is required.

Chemical Structure:



Chemical Formula: $C_{20}H_{30}O_6$

Cas: 3130-19-6

Physical properties:

Appearance	: Liquid
Color	: Colorless to pale yellow
Odor	: Odourless
Specific gravity at 25°C	: 1.140-1.158
Viscosity at 25°C, mPas	: 550 -750
Epoxide equivalent weight	: 190-210
Color (Gardner)	: 0 - 1

Application Properties

- Very flexible when formulated with OC 1005 and OC 2005 cycloaliphatic epoxide resins.
- Adhesion to certain plastic substrates is improved.
- Improved toughness.

Applications

- Metal decoration coatings
- Overprinting varnishes
- Flexible packaging
- Laminating adhesive

Since your specific application and conditions of use are beyond IGM Resins control, you must determine the suitability of the product and the suggestions mentioned herein for your specific guidance only.

Storage Conditions:

Do not expose to direct sunlight. Store at room temperature between 5°C and 25°C. Avoid contact with alkaline additives and water. Store the product, in original, tightly closed containers and stored under the above mentioned conditions.

Packaging: 20 / 200 kg net.

Safety & Handling

Omnilane OC3005 should be handled in accordance with good industrial practice. Detailed information is provided in the Material Safety Data Sheet (MSDS).

Important:

This information is not to be taken as a warranty or representation for which we assume legal responsibility, nor as permission or recommendation to practice any patented invention without a license. It is offered solely for consideration, investigation, and verification.

Headquarters: **I G M Resins B.V.**

Postal Address: P.O. Box 265, 5140 AG Waalwijk - The Netherlands

Visiting Address: Vredesplein 28, 5142 RA Waalwijk - The Netherlands

Phone: +31 416 316 657 Fax: +31 416 564 632